

PARENT NEWSLETTER



December 2023

Principal's Message

Meadow Lane Families,

December is a special and exciting time at Meadow Lane! The songs, crafts and special activities planned for December make the school come alive.

Last month we hosted the first trimester awards assembly. Students were recognized for their outstanding work in English Language Arts, Math and character. The top students were celebrated in every class. Finally, we acknowledged the students who had perfect or most-improved attendance. We are so proud of all of our students at Meadow Lane and I am really looking forward to what they can achieve in our second trimester.

I am challenging students to make every day count this month. We are providing a little "extra" incentives for this month. At Meadow Lane we are looking for students who can model our school wide expectations:

- ♦ Be Responsible
- ♦ Be Respectful and Kind
- ♦ Be Ready to Learn
- ♦ Be Safe

Students who are caught being good, will earn Golden Tickets and become eligible for raffle drawings this month. Thank you for partnering with us to encourage good choices at home and school.

Finally, we are nearing the end of our construction project, and we are looking forward to sharing our new facility with staff, students and families very soon! Please keep an eye out for important updates in the coming weeks!

Have a great month and a wonderful holiday season. As always, please reach out if you have questions or concerns.

Kindly,

Karen Maki, Principal



School Information

Begins at 8:00 am

Dismissal: TK/K at 1:45 pm, Minimum at 12:45 pm

Dismissal: 1st-5th at 2:00 pm, Minimum at 1:00 pm

School Holidays & Breaks

12/22-1/8 Winter Break

1/15 Martin Luther King Holiday

2/19-23 February Break

Please Arrive on Time to School

If your student arrives after 8:00 am, please have them check in at the office for a pass to class. The office is able to then mark them present and avoids autodialer calls stating your student is absent. Thank you for your cooperation, it is important to have accurate attendance for student safety. If your child is going to be **absent please call** the school office at (530) 378-7030.

JUST A LITTLE *Reminder*

12/5 Parent Booster Meeting 6:00pm

12/15 Welcome to Whoville Event 6-8pm

12/18-21 Holiday Spirit Week
Dress Up Days

12/18 TK-2nd grades Christmas Concert

12/21 Minimum Day Out at 1:00 pm

12/22 Winter Break Begins NO SCHOOL

1/9/2024 RETURN TO SCHOOL, Tuesday

1/15 Martin Luther King Holiday
NO SCHOOL

DECEMBER SCHOOL NEWS

Holiday Theme Week

We have a fun week planned beginning Monday, December 18th through Thursday, December 21st. Please take a peek at the flyer to see our scheduled dress up days. Start planning your outfits now! Students and staff love to participate and we can't wait to see everyone's creativity.



Welcome to Whoville Winter Event

The Parent Booster Club has planned a wonderful event for Meadow Lane on Friday, December 15th. Bring the family and travel through classrooms to use the photo booth and take a selfie with the Grinch, make crafts, play games and enjoy the pizza dinner. Tickets are only \$5 per person for the event. PRESALE TICKETS ARE AVAILABLE NOW. Please see the enclosed flyer for more information, complete and tear the bottom off to order event tickets and return to the office. The event will accept CASH or CHECKS only for payment for event and raffle tickets

Holiday Basket Raffle

The Parent Booster Club is hosting a raffle at our Welcome to Whoville event. Don't forget to come and see our Amazing Raffle Baskets that classes have created in room #4. You can purchase tickets at the event, 2 tickets for \$1.00, and choose which basket drawings you'd like to enter. Drawing starts at 7:15 PM so visit room #4 early to enter your tickets. You do not need to remain present to win.



Catalog Fundraiser A Great Success

Thank you to all that participated in our Holiday Catalog Fundraiser, you raised \$2,500. Wow! The school and students received delivery of the orders just before Thanksgiving break.

Every Penny Counts!

The Penny Drive raised a total of \$752 for the Memorial Fund. The classrooms who won the popcorn party were Miss Peery, Ms. Kirk, and Mrs. Woolery, each raised approximately \$100. Thank you to all who were able to donate spare change and raised even more money this year.



District Reading Challenge

Reading is SNOW much fun! Students are able to take Accelerated Reader (AR) Quizzes during the Winter Break, December 22nd-January 10th. Tests are available Monday – Friday, 8:30-2:30. Students are challenged to achieve their Trimester Reading Goal by January 10th. Please see enclosed flyer and the 3 Options listed to meet the challenge.

Christmas Concert TK-2nd Grades

Families are invited to a Christmas concert on Monday, December 18th.. Come watch your child sing fun holiday songs. Don't forget to bring your cameras to capture all the fun! The concert will be at the Anderson Middle School Big Gym. Parking is limited, please plan accordingly. See enclosed flyer for additional details:

- ♦ TK/Kindergarten concert is at 9:30 AM
- ♦ 1st Grade concert is at 10:15 AM
- ♦ 2nd Grade concert is at 11:00 AM

Kindness Tuesday & Spirit Fridays

Join us every Tuesday in wearing a shirt with a positive message to promote kindness all over our campus! Staff and students are encouraged to wear kindness shirts and to practice positivity throughout our school.

Show your school spirit every Friday! Wear your Meadow Lane Eagles t-shirts or school colors with pride. Let's turn the whole school blue and white.



DECEMBER SCHOOL NEWS

Monthly Character Trait



This month's trait is "RESPONSIBILITY". This month we're challenging students to reflect on their experiences and take responsibility for how they choose to learn and grow from these experiences. See more information on the attached Family Newsletter from Capturing Kids Hearts. The 3 steps include activities to help families celebrate their accomplishments, identify new areas to improve, and consider new ways to serve others.



District Reading Challenge

Listed below are 3 options for reading to help your student meet the challenge.

1. **Destiny Discover:** Students can log into Meadow Library from their classlink page and hold books. Books are picked up from a convenient location.
2. **Get Epic!** Digital reading of leveled books are provided here. Students are enrolled in their teacher's digital classroom and are provided a classroom code. Ask your child's teacher for details
3. **SORA:** Students are members of NorthNet Library system, because they are enrolled in our school district. Access is available on the classlink page for students. Login is automatic. Please add the NorthNet Library to your libraries access to thousands of eBooks to read! Mrs. Saltsman, our Library Clerk is available if you need help.

Join the Parent Booster Club

Please mark your calendar. They meet the first Tuesday of every month at 6:00 pm in room #4. This month they are finalizing details for the "Welcome to Whoville" event to be held on Friday, December 15th. Please join them on Tuesday, December 5th.

He's Back!

Eagles is Meadow Lane's Elf. He just arrived from the chilly North Pole. He is here to create magic for our students. They can look for him every day in a different location to see what shenanigans he's up to. Watch Facebook for updates.

November's TEAMWORK

Character Award Recipients

Congratulations to the students listed below who were chosen to receive the November Character Award by their teachers.

Aaliyah Smith-Mitchell	Kayla Preciado Espinoza
Abigale Nelson	Landen Sanchez
Allison Aldridge	Landon Bennett
Amina Latchford	Layla Gallegos
Aubrey Ruiz	Lilyana Key Escobar
Ava Alvarez	Luke Peterson
Brayden Greenfield	Lyric Garnes
Brenda Sarmiento-Carrasco	Maylin Drake
Brody Reagers	Miles Mitchell
Brooklyn Smith	Noah Tautala Mcgruder
Charlotte Donnelly	Penelope Herrera
Christian Dillhoff	Reed Thomas
Conner Kester	Ruger Robinson
Dominik Ruiz	Santiago De La Torre
Emilee Fuller	Sofia Boyd
Emmett Armstrong	Stryker Garcia
Gabriel Castro	Sydney Alleson
Grayson Jennings	Thomas Jensen
Justin Lycan	Vincent Sanchez
Kaianna Haskins	Will Stevens



Meadow Lane Elementary School

Construction Update

PG&E has installed permanent power to our new building. The fire alarm system has been relocated from the current office to our new building and all systems have been tested. We are in the final stages and expect the new building to be completed soon.



As final items are being completed in the new building we have been receiving deliveries. Paper towel and soap dispensers, garbage cans, floor mats, and a volleyball net & hardware have been installed so far. In the next couple of weeks office furniture will begin to arrive, be assembled and placed in the various offices and lobby areas.

Contractors are busy completing items and creating a punch list of small items that need to be fixed or repaired as they prepare to turn the building over to Cascade Union Elementary School District. We are hoping to have official custody of the building before the end of the year, so we are in countdown mode. Staff has also received training on operating the bleachers, all the basketball hoops, etc.

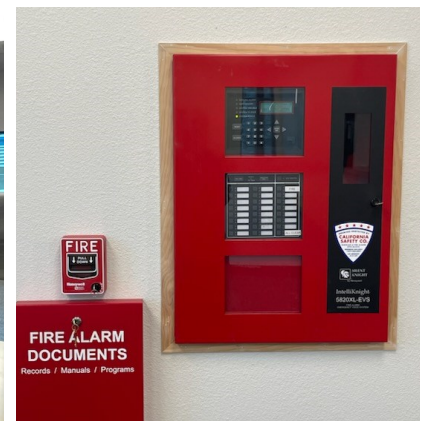


Now the big push now is to have all the technology installed and functioning so the office and kitchen can move in. The technology contractor will install internet, phone systems and a big screen in the gym for assemblies and meetings. Technology work is starting soon. The kitchen is still waiting for dry storage racks to be installed and to receive a health inspection required before it is food service ready.



The sidewalk in front of our new building has been re-opened and some parking spaces have also been made available. Families and visitors now have use of the front half of the new parking lot and full use of the Balls Ferry sidewalk. We are still using our current office space that can only be accessed from the Bus Loading Zone side of campus.

Watch for information on a Ribbon Cutting Ceremony in the new year.



Do Your Part

Own your thoughts, words, and actions.

*This month, we're challenging your students to reflect on their experiences and take responsibility for how they choose to learn and grow from these experiences. **We are partnering with you to grow and develop your child's sense of responsibility.** As you reflect as a family, celebrate your accomplishments, identify areas you may want to improve, and consider new ways to serve others in the days ahead.*

1 ENGAGE: 100 Family Memories

100 Family Memories. This December, challenge your family to list 100 family memories from the year, big and small. As memories come to mind, add them to the list. At the end of the month, share and reflect on these memories as a family. Celebrate the good ones, talk about the lessons you may have learned from the hard ones, and think about how you have grown this year.



2 EMPOWER: One Word

Instead of writing a long list of resolutions or goals for the new year, ask each family member to focus on one word. Set aside time and ask each family member to share their word and why they chose it. Get creative and make a sign or decorate a notecard with this word to remind you.



3 EXCEL: Neighborhood Sunshine Walk

Neighborhood Sunshine Walk. As a family, write a few notes of encouragement to uplift or affirm those in your community. Take a walk in your neighborhood or apartment building and leave these notes of encouragement on windshields, doors, or mailboxes to spread a little sunshine.



Conversation Starters

- ♥ What is your favorite memory from this past year?
- ♥ What are three important things you have learned in school so far?
- ♥ What is one thing you want to learn to do next year?

Meadow Lane

DECEMBER

18th –21st



MONDAY

Reindeer Day

Wear your Antlers

TUESDAY

Whoville Day

Dress like a “Who” from Whoville
or wear Green like “A Grinch”



WEDNESDAY

Snowman Day

Dress like a Snowman
and wear White

THURSDAY

Polar Express Day

Wear your PJ's to ride into
Winter Break

FRIDAY

No School– Winter Break

Happy Holidays
From Meadow Lane

Holiday Dress Up Week

DECEMBER





Welcome to Whoville



Meadow Lane Parent Booster Club is hosting

Welcome to Whoville

We will be welcoming the Grinch, to enjoy a Christmas celebration with us at Meadow Lane School.

Friday, December 15th

6:00 PM- 8:00 PM

Tickets are \$5.00 for each person participating

Where: Meadow Lane Elementary School (Enter by the bus zone)

What: We have 3 Arts and Crafts Activities and 4 Minute to Win It Games

Food: We will be serving a Slice of Pizza, a cup of Hot Cocoa, and a Sweet Treat which is all included in the event purchase price.

****THIS IS A CASH/CHECK ONLY EVENT****

WE WILL NOT BE SELLING FOOD SEPARATELY!

Presale is now until December 14th, 2023

Don't forget to come see our Amazing Raffle Baskets in Room #4

- ♦ Raffle tickets for the baskets will be sold at the event in Room #4.
- ♦ Drawing starts at 7:15 PM, so stop there right away
- ♦ You do not need to be present to win

Student's Name: _____ Room #: _____

Teacher's Name: _____

of Event Tickets: _____ Total Amount Enclosed: \$ _____

(\$5.00 per participating person/child, includes all food, cocoa, & activities)





*Please join us for a
Meadow Lane Elementary School*



CHRISTMAS CONCERT

Monday, December 18th
at Anderson Middle School, Big Gym

TK/Kindergarten
Performance
9:30-10:00 AM

1st Grade
Performance
10:15-10:45 AM

2nd Grade
Performance
11:00-11:45 AM

Please park near the big gym
by the District Office (1645
West Mill St.) off Mill Street,
families **Do Not** need to check
in at the middle school office





WINTER BREAK READING CHALLENGE

Dec. 22-Jan. 10

MONDAY-FRIDAY
8:00-2:30

TO WIN AN AMAZON PRIZE

65% POINT GOAL

- READ IN YOUR BOOK LEVEL

- 85% ACCURACY

READING IS

SNOW

MUCH FUN





BREAKFAST

All breakfasts include the following components: 2 Oz. Grains, 1 Cup Fruit & 1 Cup Milk. *Optional breakfast is cereal, crackers, fruit & milk

DECEMBER 2023

Cascade Union Elementary School District
Meadow Lane



LUNCH

All lunches include the following components:
1 Cup Milk, 1-2 Oz. Meat/Meat Alt., 1-2 Oz Grains, Fruit & vegetables

Monday

BREAKFAST:
SAUSAGE, EGG & CHEESE BISCUIT
FRUIT

LUNCH:
FRENCH TOAST & SAUSAGE
VEGGIE JUICE
FRUIT

BREAKFAST:
BISCUIT & GRAVY
FRUIT

LUNCH:
CHICKEN QUESADILLA
REFRIED BEANS, SALSA
FRUIT

BREAKFAST:
SAUSAGE, EGG & CHEESE BISCUIT
FRUIT

LUNCH:
HOMEMADE
BEAN & CHEESE BURRITO
CARROTS & FRUIT

Tuesday



BREAKFAST:
BISCUIT & GRAVY
FRUIT

LUNCH:
CHICKEN, RICE & BEAN BURRITO
CARROTS
FRUIT

BREAKFAST:
EGGS & TOAST
FRUIT

LUNCH:
EGG McMUFFIN
VEGGIE JUICE
FRUIT

BREAKFAST:
BISCUIT & GRAVY
FRUIT

LUNCH:
CHILI & CORNBREAD
VEGGIE JUICE
FRUIT

Wednesday

BREAKFAST:
HOMEMADE MUFFIN
STRING CHEESE & FRUIT

LUNCH:
SPAGHETTI & ROLL
SALAD
FRUIT

BREAKFAST:
HOMEMADE MUFFIN
STRING CHEESE & FRUIT

LUNCH:
MAC & CHEESE
GREEN BEANS
FRUIT

BREAKFAST:
HOMEMADE MUFFIN
STRING CHEESE & FRUIT

LUNCH:
ORANGE CHICKEN & RICE BOWL
BROCCOLI
FRUIT

Thursday

BREAKFAST:
EGGS & TOAST
FRUIT

LUNCH:
MEATLOAF
SUN CHIPS
MASHED POTATOES & FRUIT

BREAKFAST:
FRUIT & YOGURT PARFAIT

LUNCH:
LOADED POPCORN CHICKEN BOWL
CARROTS
FRESH FRUIT

BREAKFAST:
FRUIT & YOGURT PARFAIT

LUNCH:
TURKEY GRAVY
MASHED POTATOES
ROLL & FRUIT

Friday

BREAKFAST:
PANCAKES
FRUIT

LUNCH:
CHICKEN PATTY SANDWICH
VEGGIES & RANCH
FRUIT

BREAKFAST:
EGG & CHEESE CROISSANT
FRUIT

LUNCH:
CORN DOG
BAKED BEANS
FRUIT

BREAKFAST:
PANCAKES
FRUIT

LUNCH:
PIZZA
SALAD & FRUIT
BIRTHDAY TREAT

**NO
SCHOOL**

25

26

27

28

29

Winter

Break- No School

Menus are subject to change

This institution is an equal opportunity provider.

Happy Birthday to everyone with a birthday in December!
Birthday treat comes with hot lunch only.

HOW SICK IS **TOO SICK?**



Send me to school if...

I have a runny nose or just a little cough, but no other symptoms.

I haven't taken any fever-reducing medicine for 24 hours, and I haven't had a fever during that time.

I haven't thrown up or had any diarrhea for 24 hours.



Keep me at home if...

I have a temperature higher than 100 degrees even after taking medicine.

I'm throwing up or have diarrhea.

My eyes are pink and crusty.



Call the doctor if...

I have a temperature higher than 100 degrees for more than two days.

I've been throwing up or have diarrhea for more than two days.

I've had sniffles for more than a week, and they aren't getting better.

I still have asthma symptoms after using my asthma medicine (and call 911 if I'm having trouble breathing after using an inhaler).