

# REQUEST FOR PROPOSAL

Cascade Union Elementary School District

## **Low Voltage Wiring and Audio/Visual System for Meadow Lane Elementary New Gymnasium**

Bid No. CUESD-CUPCCAA-2023-09-29

Allowable Contract Date

4:00 pm Friday, October 13<sup>th</sup>, 2023

## OVERVIEW

The construction project of the new gymnasium and administrative offices at Meadow Lane Elementary School (2770 Balls Ferry Rd, Anderson, CA 96007) is in its final stages. Low voltage wiring installation—copper and fiber optic ethernet, plus related equipment—is required throughout the building to provide network connectivity, notification systems, wireless access, and surveillance systems to all offices, workspaces, and/or serviceable areas. In addition, a contemporary and high-grade audio/visual (A/V) system installation is required in the main room (gymnasium) for assemblies, presentations, and school and community events.

## CUPCCAA

CUPCCAA bidding guidelines and procedures are being followed for this RFP. If you are a vendor interested in submitting a proposal but are not currently on our CUPCCAA Contractor List then please contact Brooke Wagner, Executive Assistant to the Superintendent, at 530-378-7000 x7102 or [brooke.wagner@cuesd.com](mailto:brooke.wagner@cuesd.com) to receive a *Notice of Invitation* and CUPCCAA *Registration* form. (Note that this information has also been posted alongside this document in the *Technology Services Department* portion of the district's website under the *Request for Proposals (RFP)* drop-down section.)

## SITE-WALKS

There will be two scheduled site-walks for prospective vendors to see the layout of the new building, review terms of the project, and ask relevant questions.

The **first** site-walk will be **2:00pm Thursday, October 5<sup>th</sup>**.

The **second** site-walk will be **10:00am Tuesday, October 10<sup>th</sup>**.

The location of both site-walks will be 2770 Balls Ferry Rd, Anderson, CA 96007.

## REQUIREMENTS – LOW VOLTAGE PORTION

A detailed map of the Meadow Lane gymnasium and administrative offices structure is provided on the penultimate page of this RFP. The locations of all network cabling runs will be indicated on the map, as well as the type(s) of termination(s) at each location.

To summarize the details on this map, the low voltage portion of the project includes ~150 standard wall-jack terminations, 24ea indoor IP-based clock/intercom devices, 3ea outdoor IP-based paging speaker devices, 2ea outdoor IP-based 180° camera devices, 1ea outdoor IP-based dome camera device, 2ea IP-based vape detection sensor devices, 1ea 12-strand single mode fiber optic cabling run from the site's MDF to the new building's IDF, and 1ea data rack to be located in the building's IDF.

Hardware and brand requirements are as follows:

- 1) Commscope CAT6 cabling
- 2) Commscope copper ethernet patch panels
- 3) Middle Atlantic wall racks and related accessories
- 4) Corning fiber optic rack mounts and patch panels
- 5) Commscope indoor/outdoor grade 12 strand fiber optic cabling
- 6) Advanced Network Devices (AND) IPSWD-RWB speaker with display
- 7) Advanced Network Devices (AND) IPSWS-SM-O outdoor speaker
- 8) Axis Q3819-PVE 180° camera
- 9) Axis P3268-LVE 8MP dome camera with IR

Cascade has a natural preference for the above makes and models as they match other equipment, devices and configurations used at Meadow Lane Elementary School and throughout other school sites within the district. Equivalent/Alternative/Superior makes and models may be submitted but must be pre-approved by the district for a proposal to be considered. See the *Equivalent or Superior Products* section below for more details.

All fiber optic cabling is to be terminated with LC connectors.

Protective housing and/or cages for technology devices and equipment (e.g. intercoms, access points, etc.) is expected in the gymnasium area, as this room will be used regularly by children for sports and physical education classes.

Please also note that Cascade Union Elementary School District utilizes the *Milestone XProtect Professional+* software suite for surveillance and security devices. Camera devices submitted in a proposal must also include all requisite licensing to work with this software. (Other software applications/suites and licensing will NOT be considered.)

## REQUIREMENTS – AUDIO/VISUAL SYSTEM PORTION

Screen to be mounted on the north wall of the gymnasium above the food service window. Projector to be mounted on the south wall above the bleachers. A/V equipment to be installed within media rack, which will be adjacent to the data rack from the *Low Voltage Portion* above, and located in the IDF room. Two speaker/audio sections are expected: a left + center + right channel along the wall where the screen is to be mounted, and a series of four speakers mounted to the ceiling above the bleachers. The former set of speakers will be for video presentations where the bleachers may or may not be in use, and the latter set of speakers will be for presentations/assemblies/etc. where a crowd is sitting in the bleachers.

Hardware and brand requirements are as follows:

- 1) Da-lite 70272L COSMO TNSD 226D DM Tensioned 226" diagonal screen
- 2) Da-lite 40973 Single Motor Low Voltage Control System (for screen)
- 3) Epson V11HA65920 EB-PU2113W 13000 Lumen WUXGA Projector
- 4) Epson V12H004MOB Middle Zoom Lens 4
- 5) Chief wall mounts, security cages and related accessories
- 6) Atlona HDMI/HDBaseT interfaces and related accessories
- 7) Commscope CAT6 cabling
- 8) Middle Atlantic wall racks and related accessories
- 9) JBL AWC159-BK 15" 2-Way All-Weather Compact Coaxial Loudspeaker
- 10) Crown DCi4x600 Four-channel 600W @ 40 Analog Power Amplifier
- 11) Furman 15A Advanced Power Cond/Lights W/SMP & Voltmeter 9 Outlets 1RU
- 12) Denon Pro DN-312X 12-Channel Line Mixer
- 13) Hosa Pro Stereo Breakout, REAN 3.5 mm TRS to Dual XLR3M
- 14) DBX 640 6x4 Digital Zone Processor
- 15) Sennheiser EW-D EM Digital single channel receiver
- 16) Sennheiser EW-D SKM-S Digital handheld transmitter with mute switch
- 17) Sennheiser MMD 835-1 BK Microphone module
- 18) DBX ZC-2 Wall Mounted, Programmable Zone Controller

*It is required that the projector have an extended warranty.*

As before, Cascade has a natural preference for the above makes and models as they match other equipment, devices and configurations used at other school sites within the district. Equivalent/Alternative/Superior makes and models may be submitted but must be pre-approved by the district for a proposal to be considered. See the *Equivalent or Superior Products* section below for more details.

Conduits for network and/or audio cabling have already been installed where the screen, projector and speakers will be located, but network cabling for these devices will need to be installed.

Power has already been installed in the locations of the screen and projector.

Construction notes about conduits run for the A/V system and the intended layout may be found on the final page of this document.

### **ADDITIONAL PROJECT NOTES**

Drop-tile ceiling has already been installed in various rooms throughout the building so additional care must be exercised when running cabling through certain rooms.

Gymnasium flooring has already been installed so additional care must be exercised to protect the flooring when traversing the area with a scissor lift.

The district will provide all network switches and access points, and related networking configurations for all equipment—these devices and additional work ARE NOT to be included in a proposal.

### **PROJECT SCHEDULE AND DEADLINES**

The ***Low Voltage Portion*** of this project is expected to be completed on or before **Friday, November 24<sup>th</sup>, 2023.**

The ***Audio/Visual System Portion*** of this project is expected to be completed on or before **Tuesday, January 9<sup>th</sup>, 2024.**

### **BID EVALUATION PROCESS**

The District will evaluate and select the winning bid based on the following criteria:

1. **Price** – The District will be evaluating the price according to the base bid price.
2. **Accuracy of Bid or Bid Response** – The District will evaluate the bid response for completeness, amendments, exceptions, and closeness to original request as specified (including alternates to what has been included in this document).

3. **Meets Standards of District** – The District will be evaluating the vendor's proposed equipment and to what level it meets the district's current needs, and existing installed equipment base and infrastructure. The project must also be completed on or before the *Project Schedule and Deadlines* as explained above.
4. **Experience** – The District will evaluate experience based on the vendor's history with the District.
5. **Qualifications** – The District will evaluate vendor qualifications based on the vendor's experience with public school entities.

Selection Criteria Weight

Price	30.0%
Accuracy of Bid Response	25.0%
Meets Standards of District	25.0%
Experience	10.0%
Qualifications	10.0%

The District reserves the right to refuse any proposal.

No vendor may withdraw its proposal for a period of fourteen (14) calendar days after the date set for the receipt of proposals.

**\*EQUIVALENT OR SUPERIOR PRODUCTS**

Vendors wishing approval of devices other than those specified in this document will be required to perform the following:

1. Provide device/software specifications and cut sheets for all devices/software for the proposed new device(s).
2. Provide an itemized comparison to each of the device/software functions as described in this specification. Include in that document how the proposed device/software compares to the specified device/system described in this document on a line by line basis, using one of the following three criteria: "exceeds," "matches," or "unequal."
3. All other products than those specifically addressed in the bid document that vendor is seeking approvals for must be **received** by the District's representative **no later than two (2) days before the submission deadline**.
4. Failure to receive written or email approval for product that deviates from what is called for in this document will result in the vendor having to replace the unapproved device(s) with the originally specified products at no additional cost to the District.

5. All proposed system documentation must be sent to the District's representative via email. The vendor will include the RFP name, its contact information, and the specification section number that the proposed system is comparable to.

## **RFP QUESTIONS**

Contact Chad Johnson, Director of Technology Services, in the Cascade District Office at 530-378-7000 x7108 or [chad.johnson@cuesd.com](mailto:chad.johnson@cuesd.com).

## **CUPCCAA QUESTIONS**

Contact Brooke Wagner, Executive Assistant to the Superintendent, in the Cascade District Office at 530-378-7000 x7102 or [brooke.wagner@cuesd.com](mailto:brooke.wagner@cuesd.com).

## **INSTRUCTIONS**

It is required that each vendor provide the following:

1. Cost detail
2. Vendor contact information

Vendors are to submit complete bids by email to [chad.johnson@cuesd.com](mailto:chad.johnson@cuesd.com).

## **PROPOSAL SUBMISSION DEADLINE**

4:00pm Friday, October 13<sup>th</sup>, 2023

*All bids received after the deadline will be rejected. Incomplete bids will be rejected.*



# SEMMINGSON

ARCHITECTURE  
a  
ENGINEERING

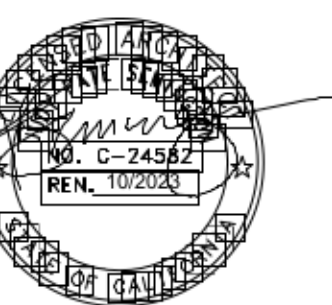
133 BRUSH STREET - P.O. BOX 210  
COTTONWOOD, CA 96022  
(530) 347-5500 F: (530) 347-7822

## A NEW ADMIN & MULTIPURPOSE FACILITY for:

MEADOW LANE ELEMENTARY SCHOOL  
CASCADE UESD







2770 BALLS FERRY ROAD  
ANDERSON, CA 96007

ARCHITECT



ENGINEER

APP.# 02-118861

REVISIONS:		
	09/19/2022	CCD #03
	-	-
	-	-
	-	-
	-	-
	-	-

OSA SUBMITTAL

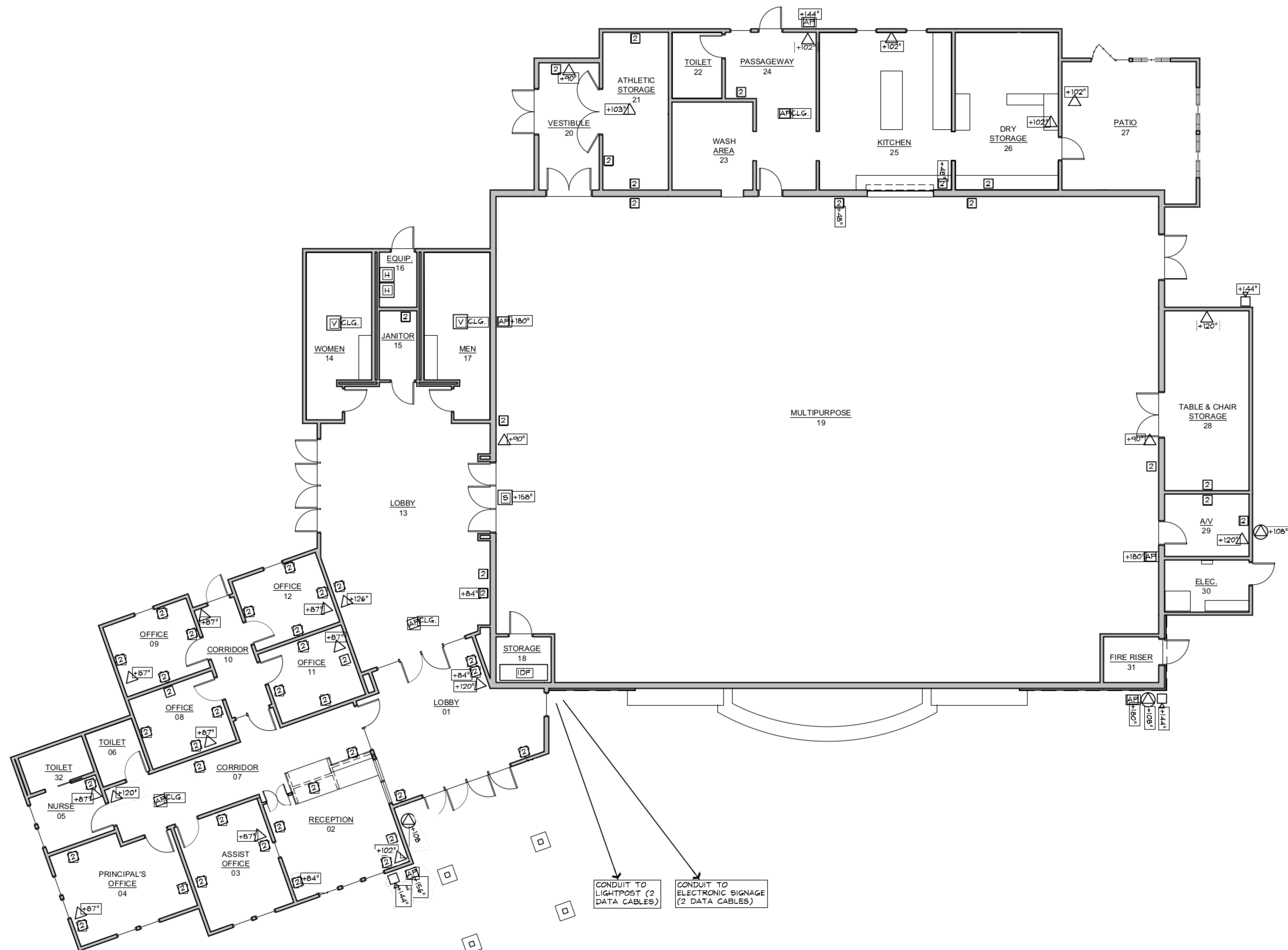
OB No.: 18209

DATE: 13-NOV-2021

T No.:

T-2.0

## TECHNOLOGY PLAN



## TECHNOLOGY PLAN NOTES

1. ALL HEIGHTS LISTED ARE MEASURED FROM FINISHED FLOOR.
2. ANY ITEM WITHOUT A HEIGHT CALLOUT IS TO BE 18" ABOVE FINISHED FLOOR
3. DATA DROPS IN LOBBY-01, RECEPTION 02, 4 LOBBY-13 THAT ARE CALLED OUT AS 84" A.F.F. ARE INTENDED FOR DIGITAL SIGNAGE (TVS) AND MUST ALSO HAVE A POWER OUTLET AVAILABLE AT SAME HEIGHT.

## TECHNOLOGY PLAN LEGEND

SYMBOL	DESCRIPTION
	STANDARD DATA DROP
	INTERCOM DATA DROP - TWO WAY
	ACCESS POINT (AP) DATA DROP
	PAGING SPEAKER DATA DROP - ONE WAY
	CAMERA DATA DROP
	VAPE SENSOR DATA DROP
	HVAC DATA DROP
	SCOREBOARD DATA DROP
	HEIGHT ABOVE FINISHED FLOOR
	ITEM AT CEILING HEIGHT

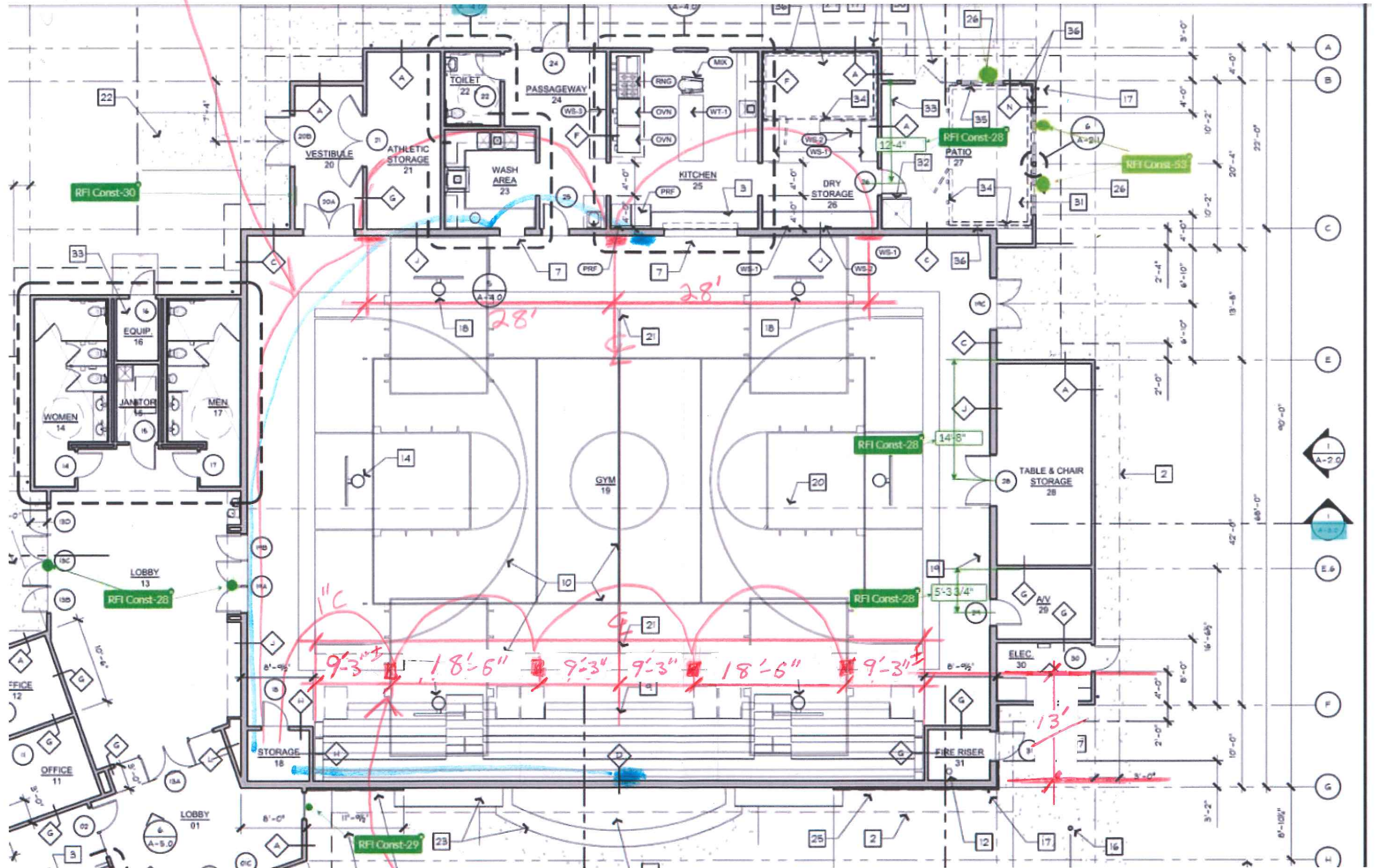
1 TECHNOLOGY PLAN  
SCALE: 1/8" = 1'-0"

SCALE: 1/8" = 1'-0"





SPEAKERS - 1" C-45 WALL BOX 24'-0" TO G BOX ABOVE FF



PROJECTION SCREEN  
 & SWITCH ← SWITCH LOCATION IN THE I.T. ROOM  
 FROM ABOVE CEILING IN 23 UP TO SCREEN LOCATION

## SPEAKERS

1" C TO 4S BOX ON TOP OF BOT CORD OF TRUSSES